

This model consists of parts of varying difficulty levels. The decking and supports are involved, but the building groups are quite simple. Feel free to make your own arrangements and accessorize as you see fit. How do you imagine this community?

MATERIALS

- Access to printer
- 24 pages (not including the cover and instructions) of white letter sized card stock - 110 lb card stock is recommended
- Adhesive - White glue and double sided tape is useful depending on the connection
- Scissors or craft knife
- Scoring tool (bone folder or dry ballpoint pen works well)

INSTRUCTIONS

- Print template pages.
- Score all dashed fold lines before cutting
- Cut along solid lines
- fold along dashed lines noting mountain or valley folds
- assemble as diagrammed... or make your own arrangements

SCALE

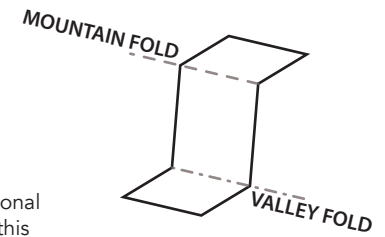
This model was created at 1/4" = 1' scale. Print at 100% in order to maintain this scale.

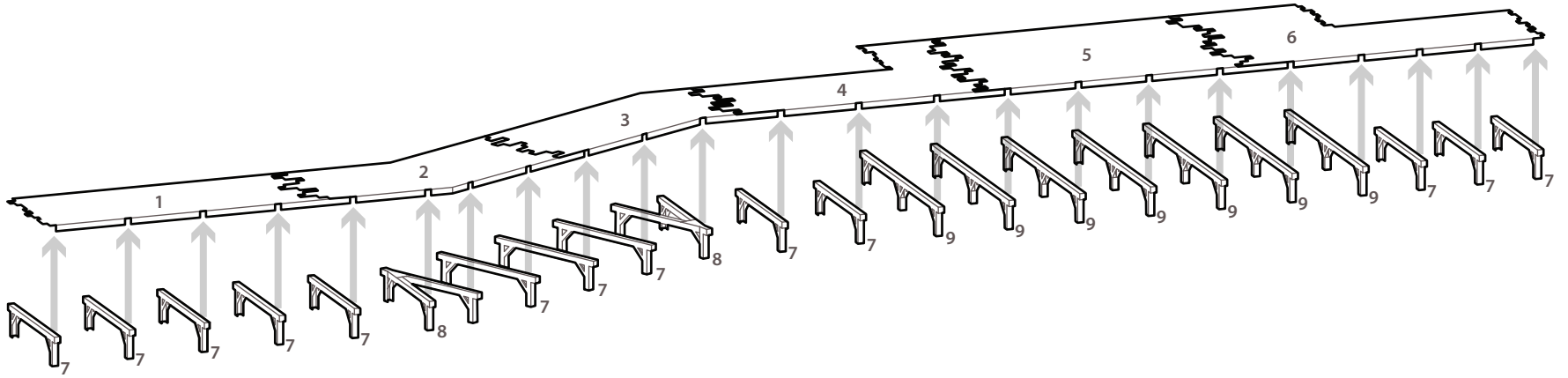
PLEASE NOTE

This work is intended for personal use only. I'm happy to share this project, but if you want to use it for any other reason please get in touch. Any commercial use of this design is prohibited.

This project was produced with the generous support of North Vancouver Recreation & Culture.

I acknowledge that this work and its area of study are located on the unceded traditional territories of the **xwməθkwəyəm** (Musqueam), **Sḵwxwú7mesh** (Squamish), and **Səlilwətaɣ** (Tsleil-Waututh) nations.





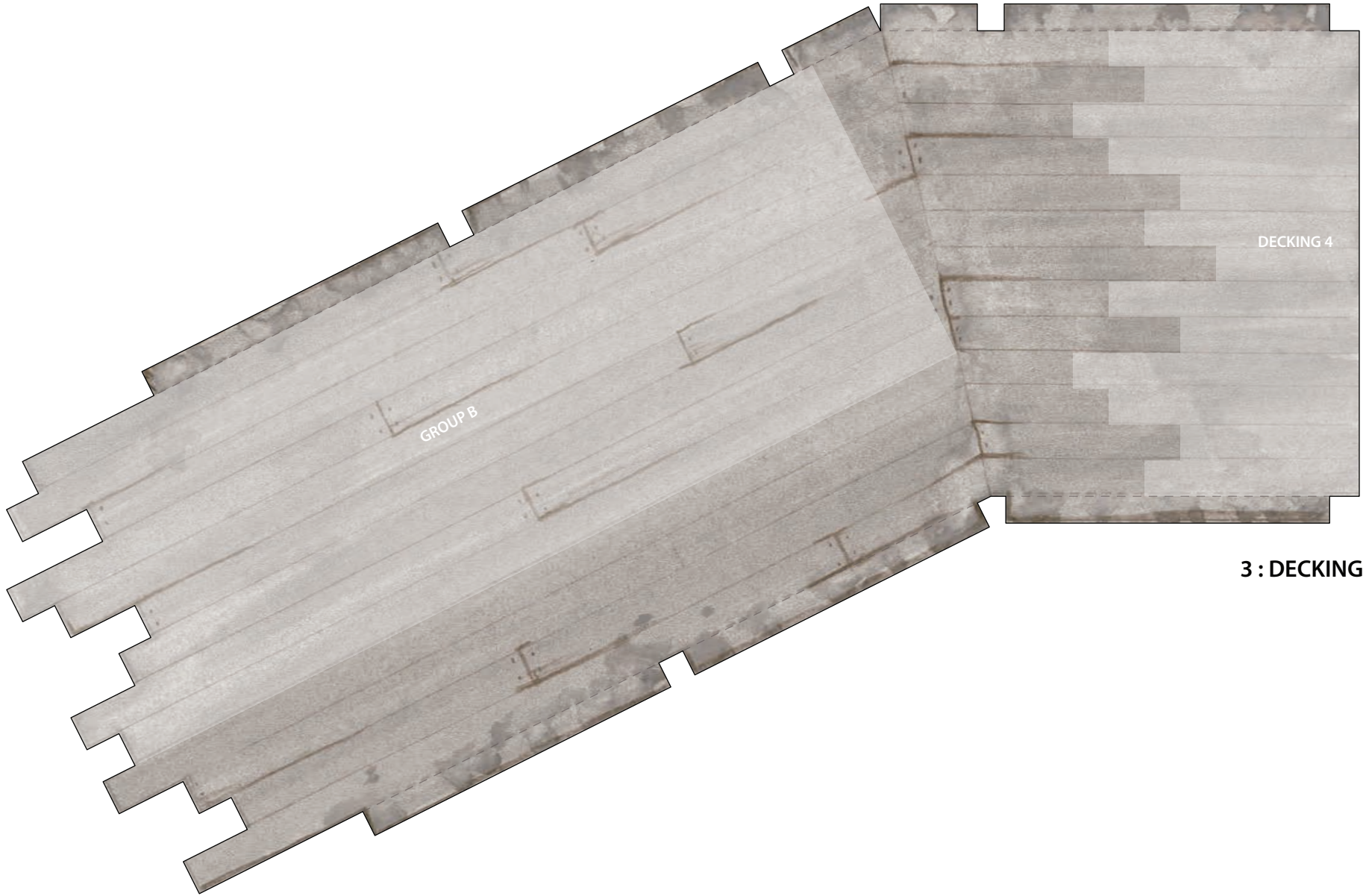
1: DECKING





2 : DECKING



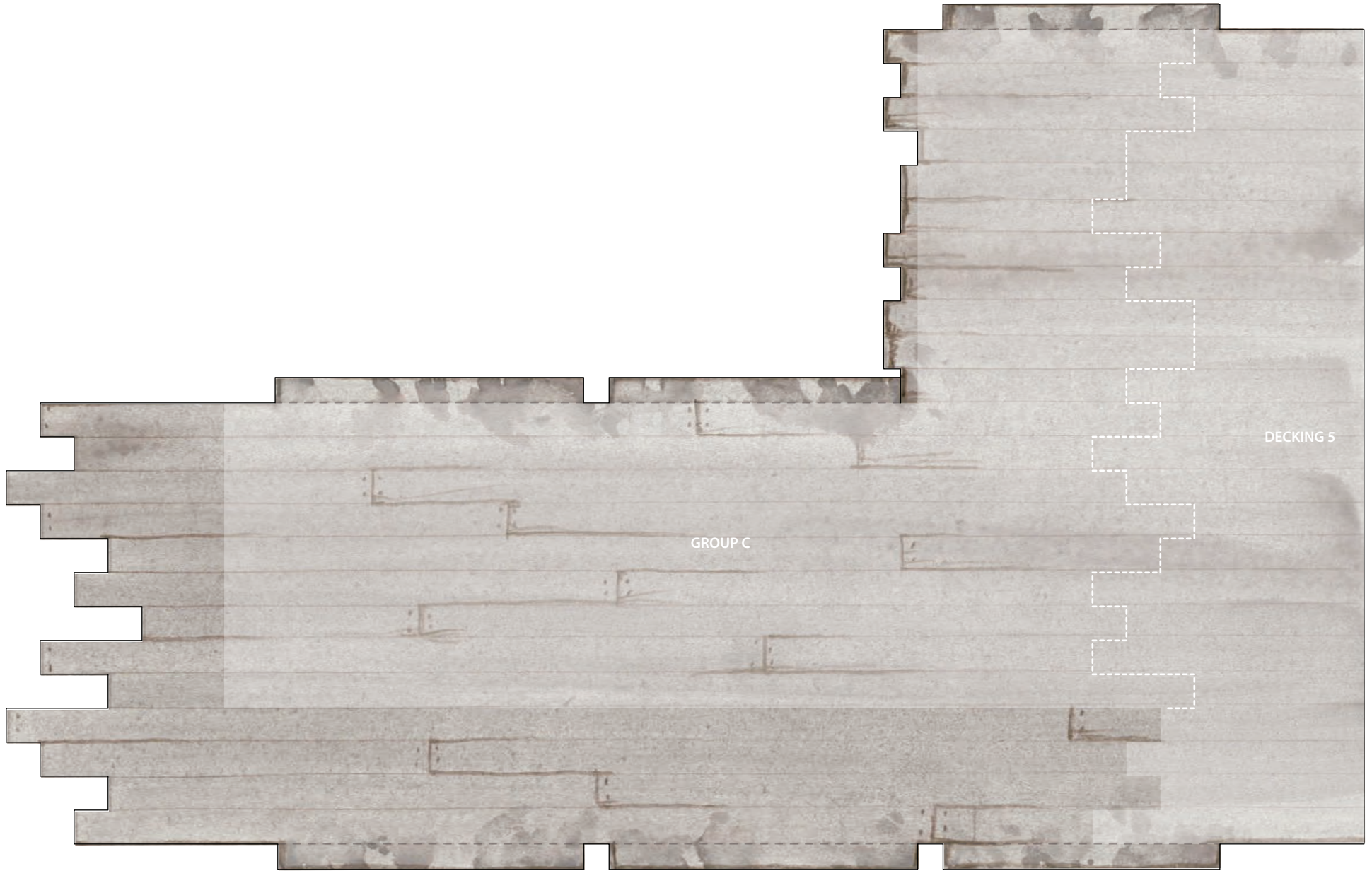


DECKING 4

GROUP B

3 : DECKING



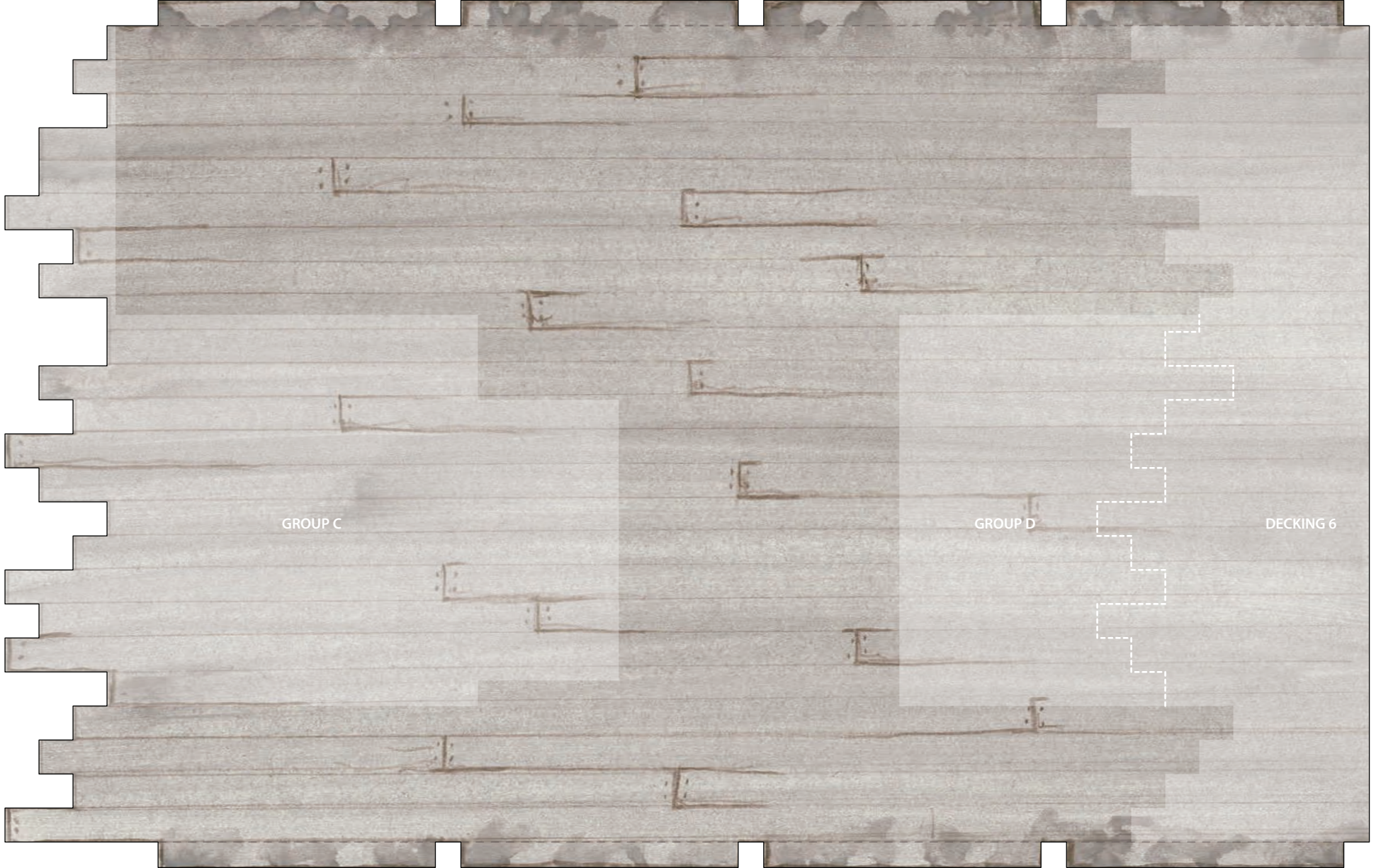


DECKING 5

GROUP C

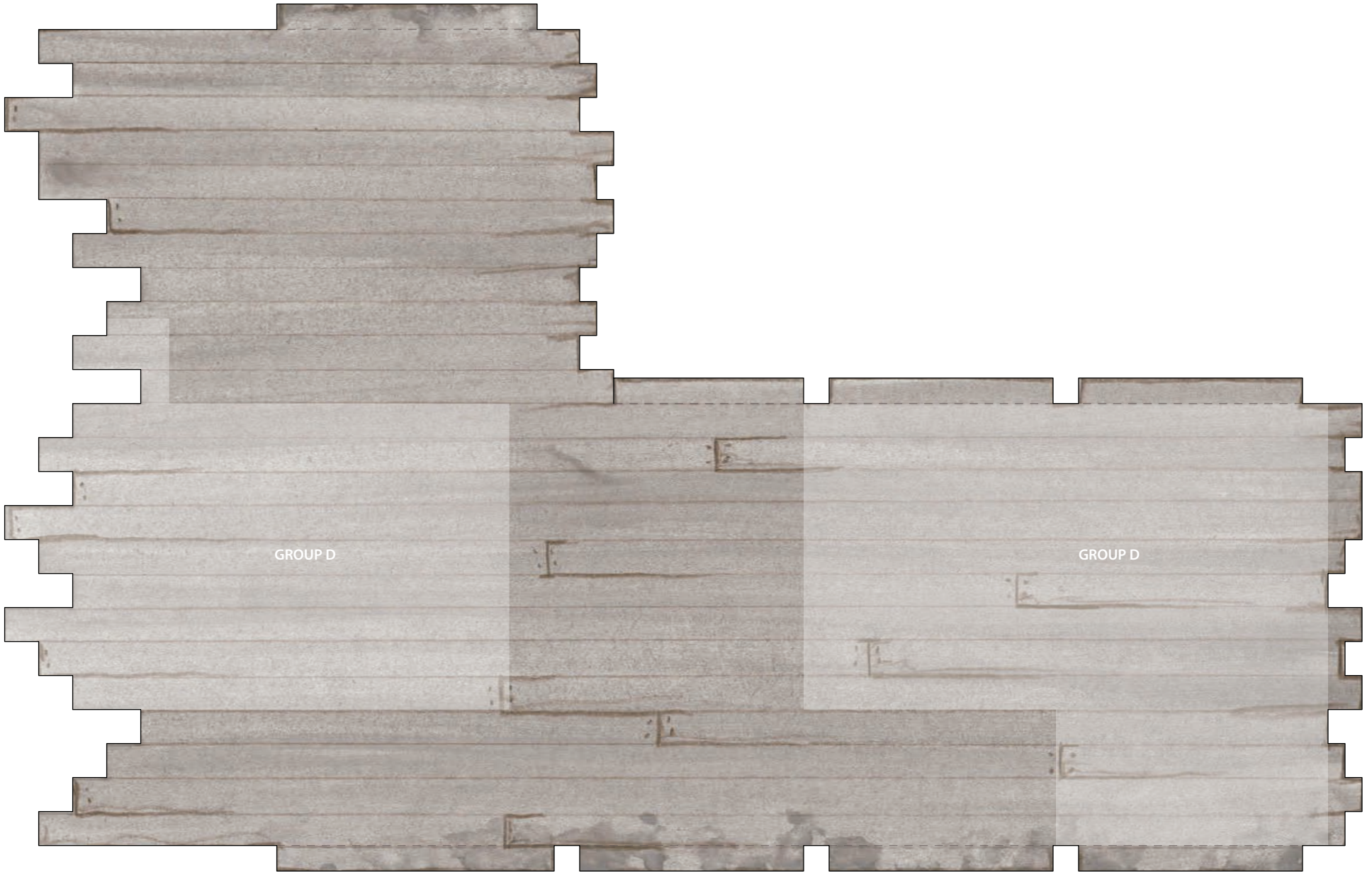
4: DECKING





5 : DECKING





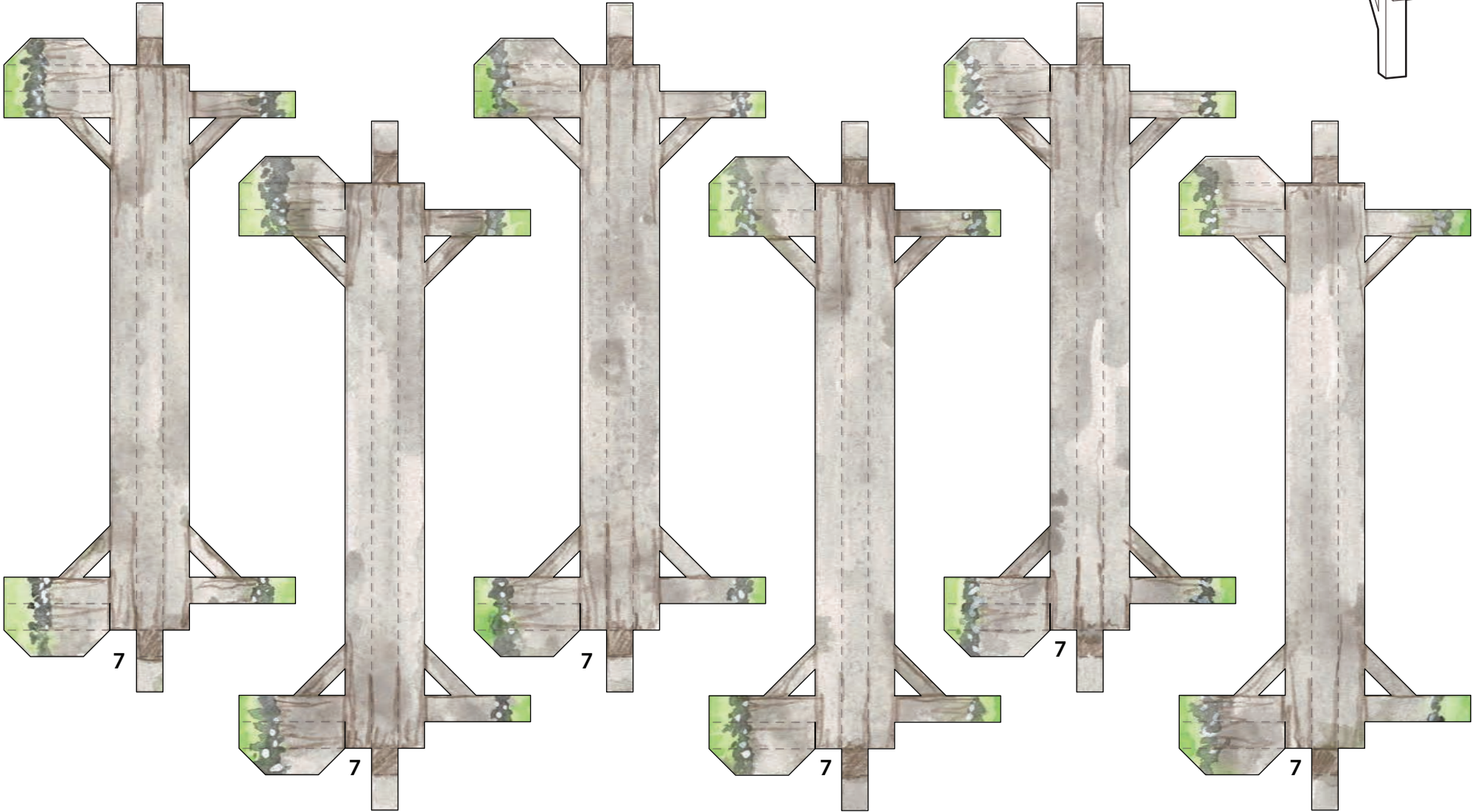
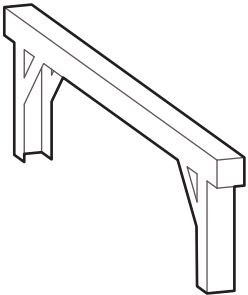
GROUP D

GROUP D

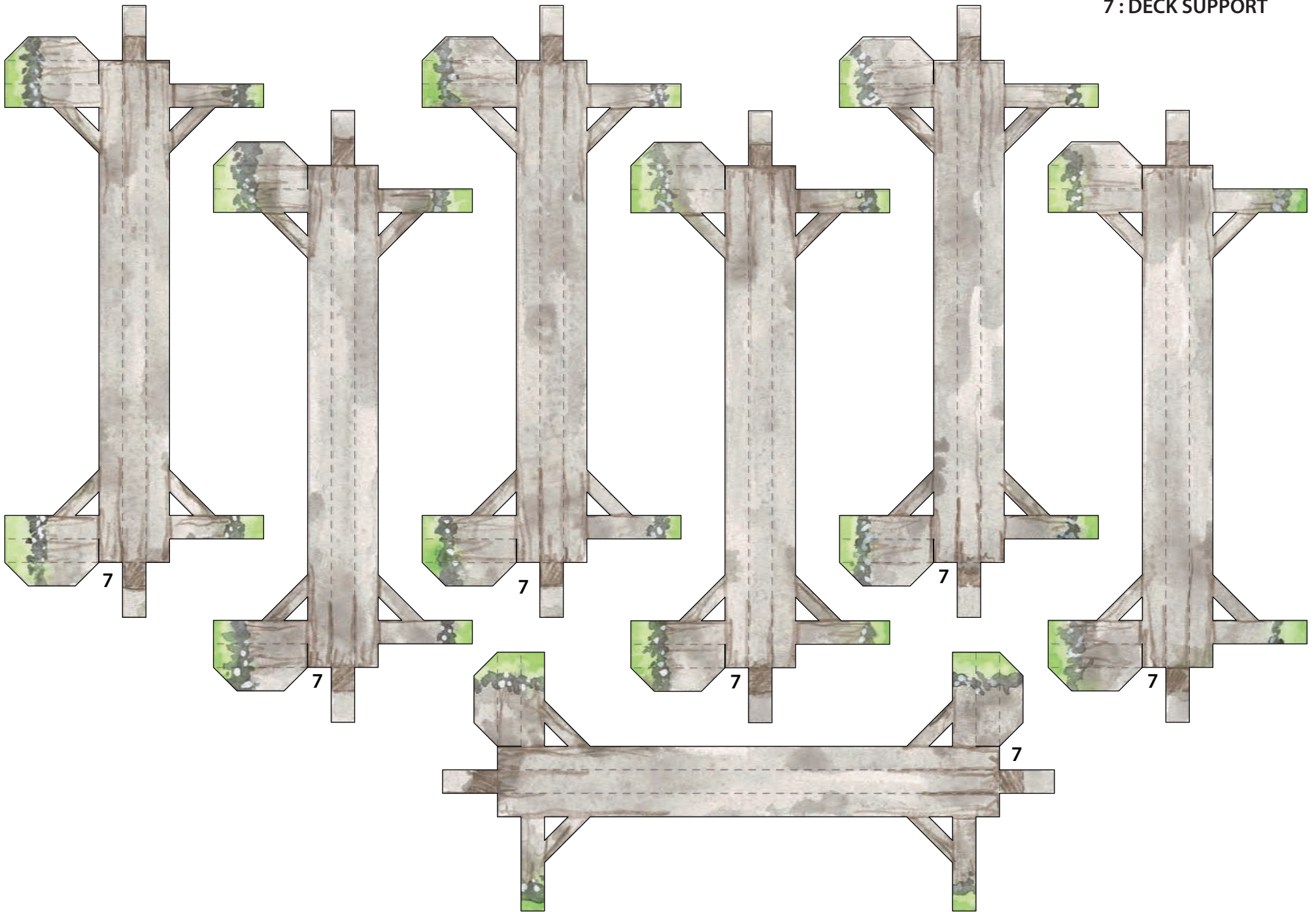
6 : DECKING



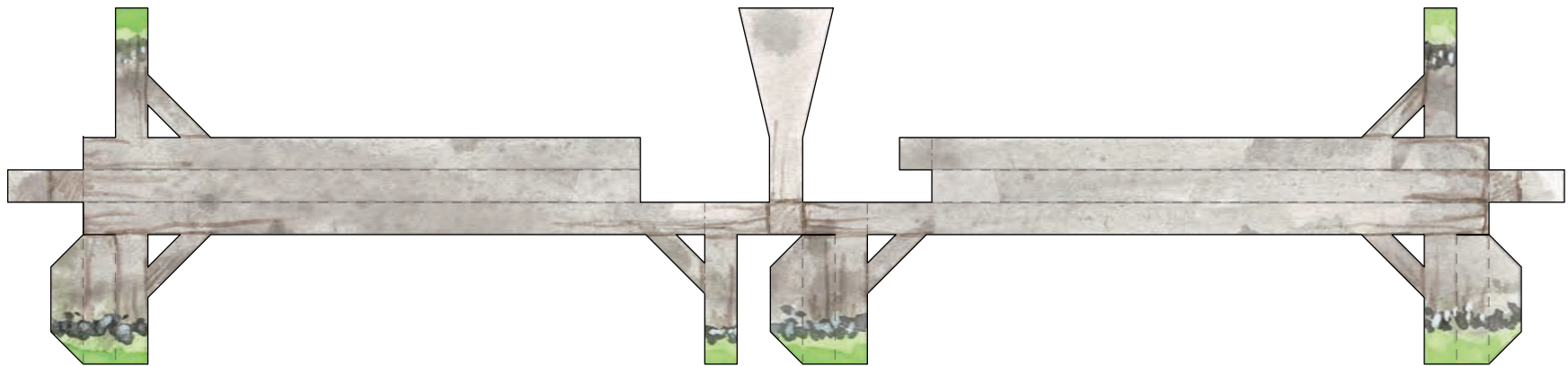
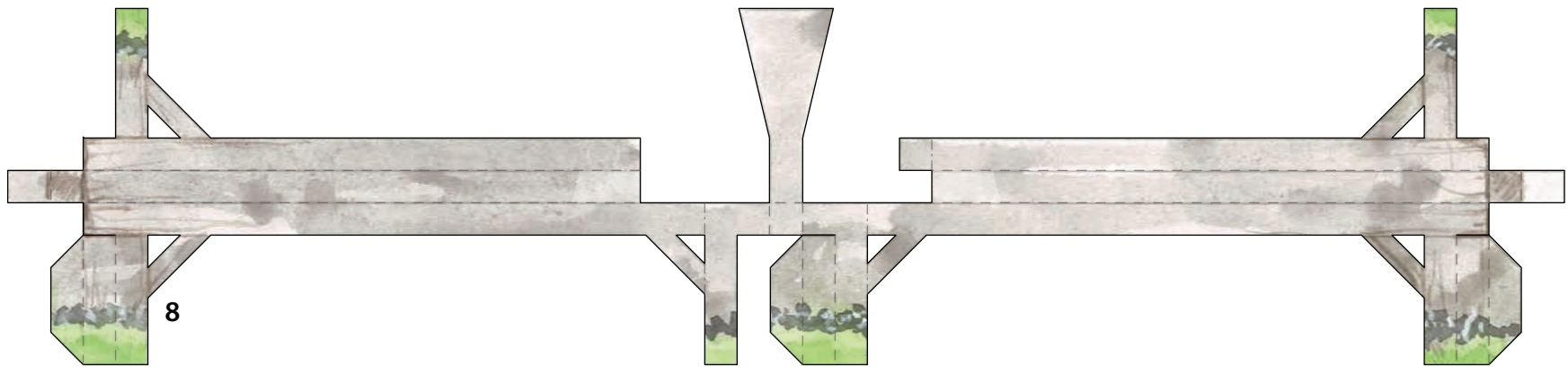
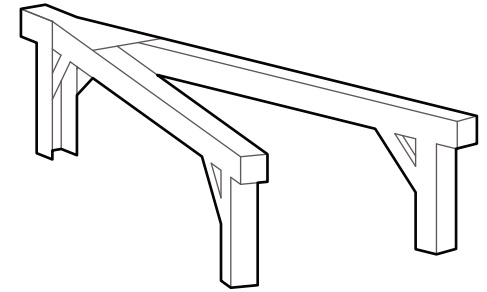
7 : DECK SUPPORT



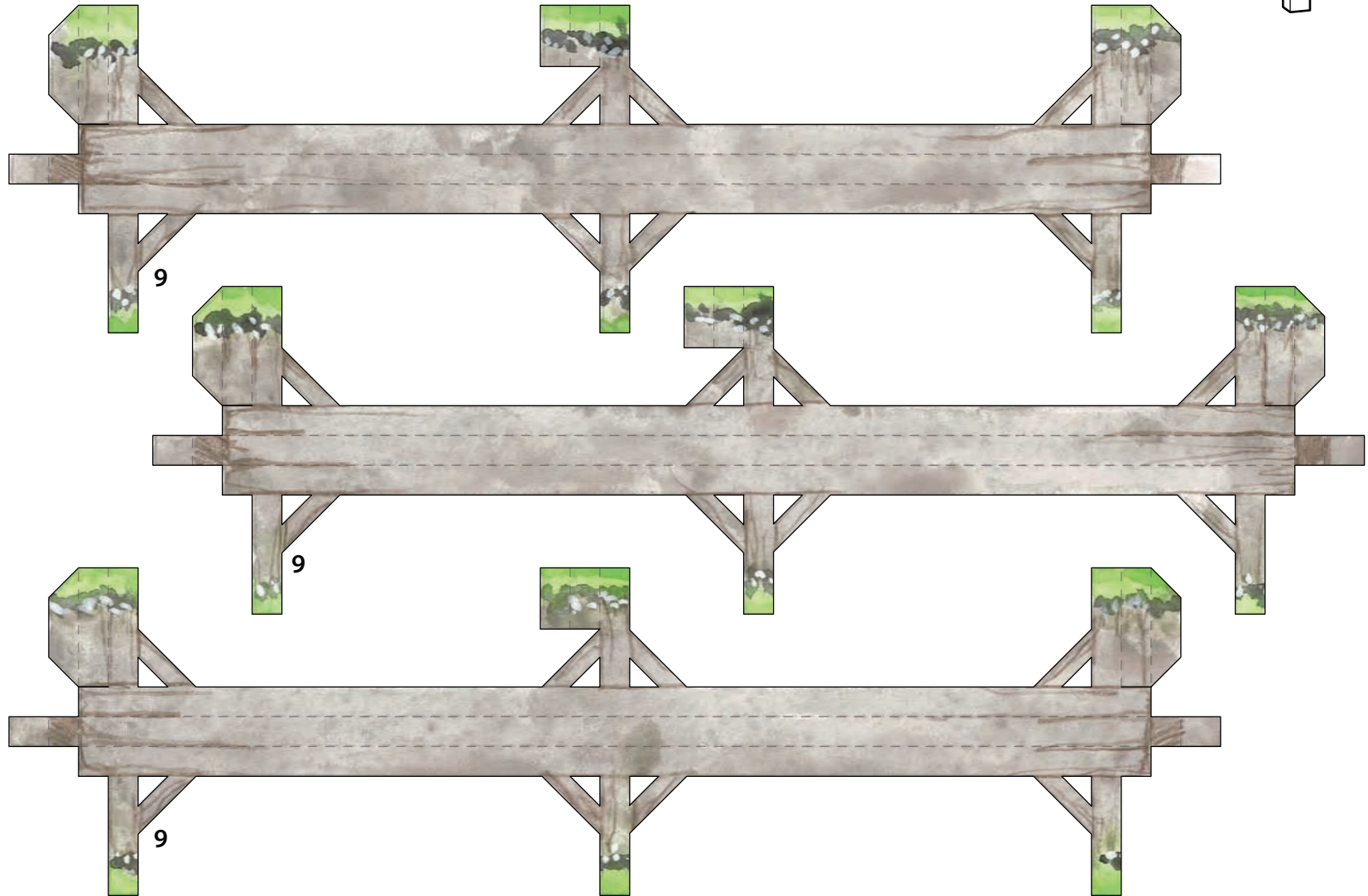
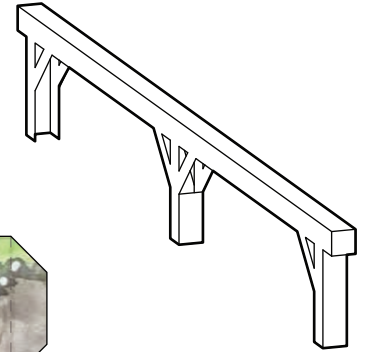
7 : DECK SUPPORT



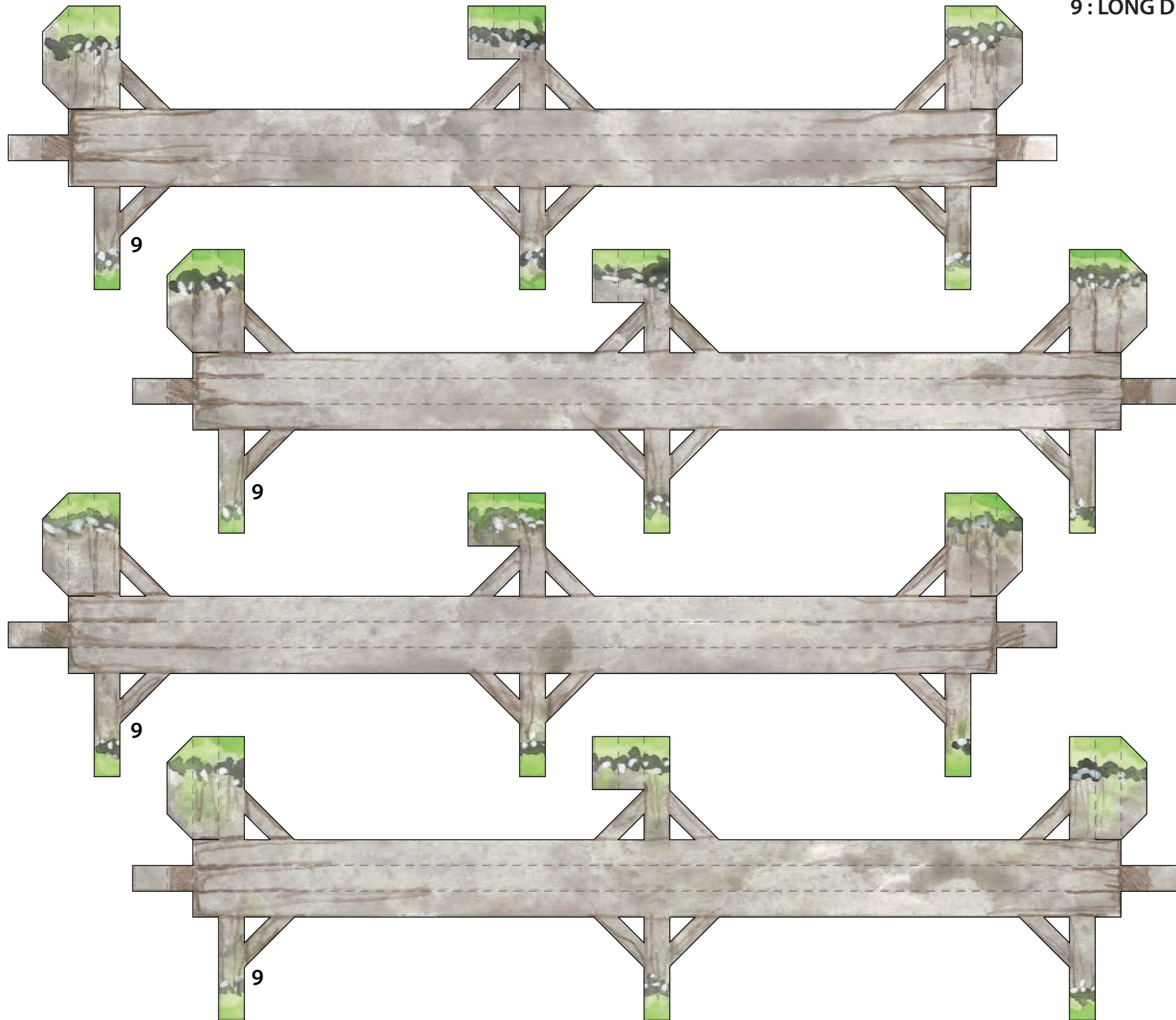
8 : THREE-POST DECK SUPPORT

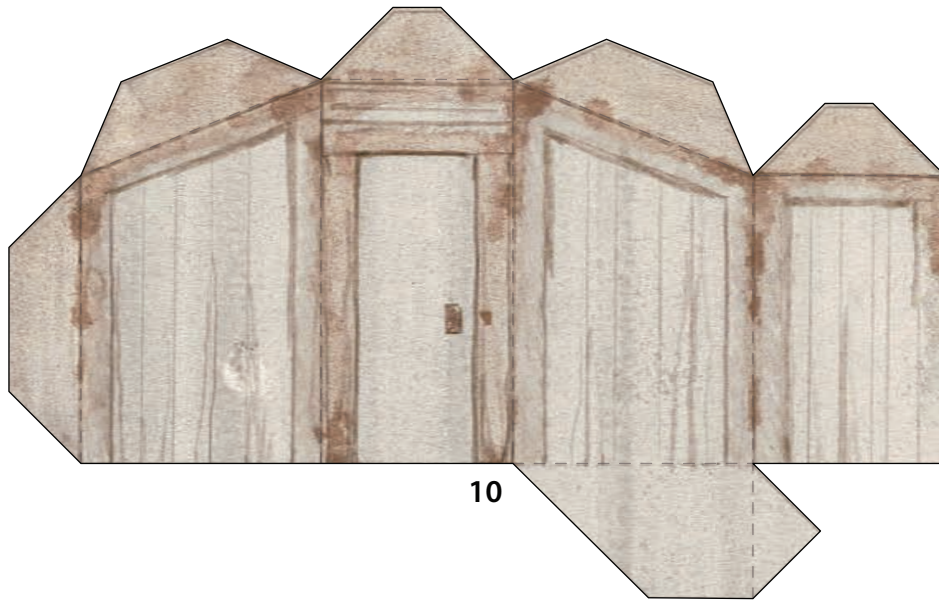


9 : LONG DECK SUPPORT

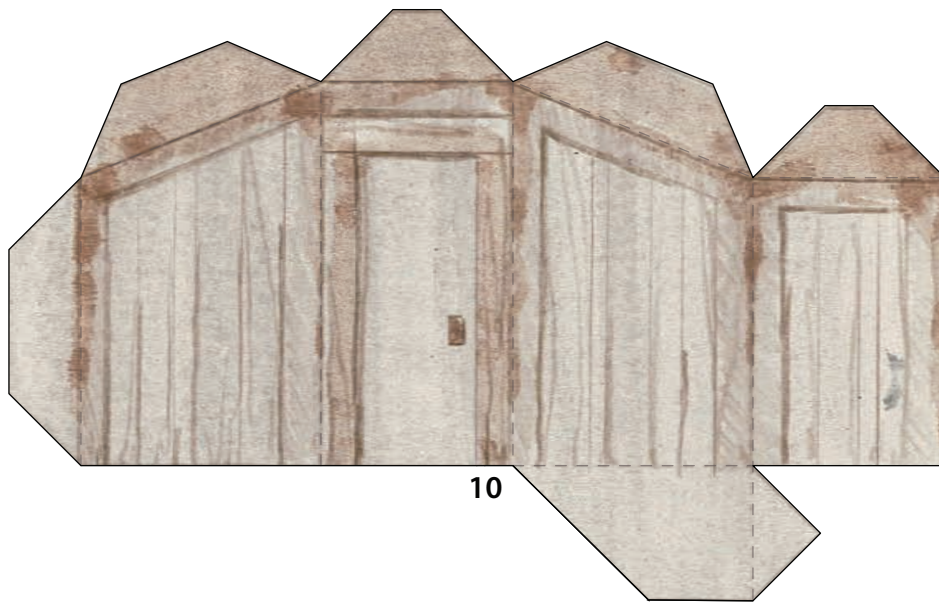


9 : LONG DECK SUPPORT

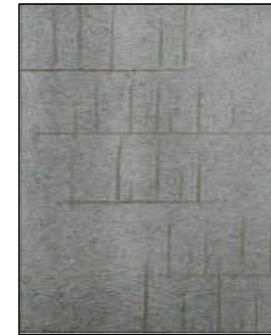




10



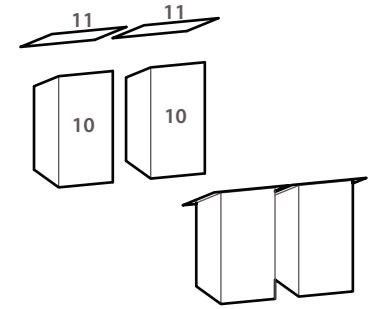
10



11

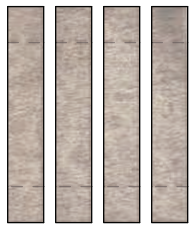


11



BUILDING GROUP A

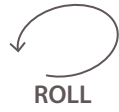




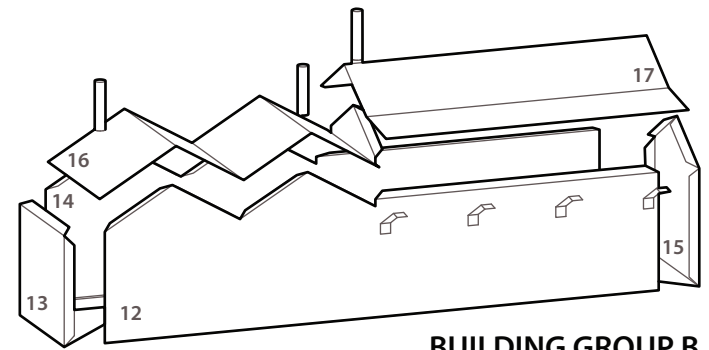
BRACES



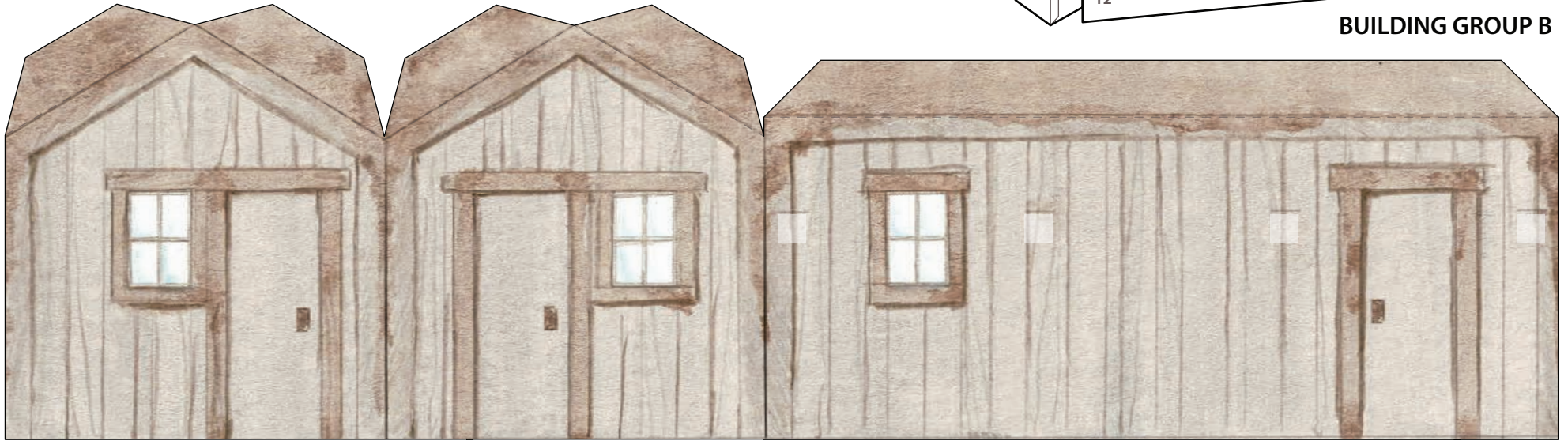
CHIMNEY



ROLL



BUILDING GROUP B



12

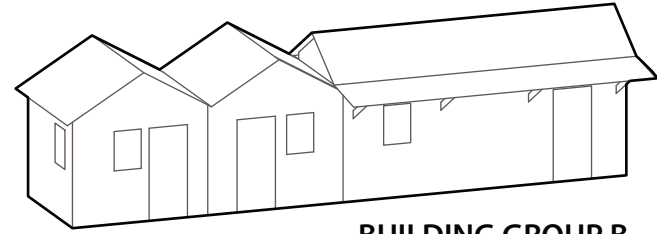


14





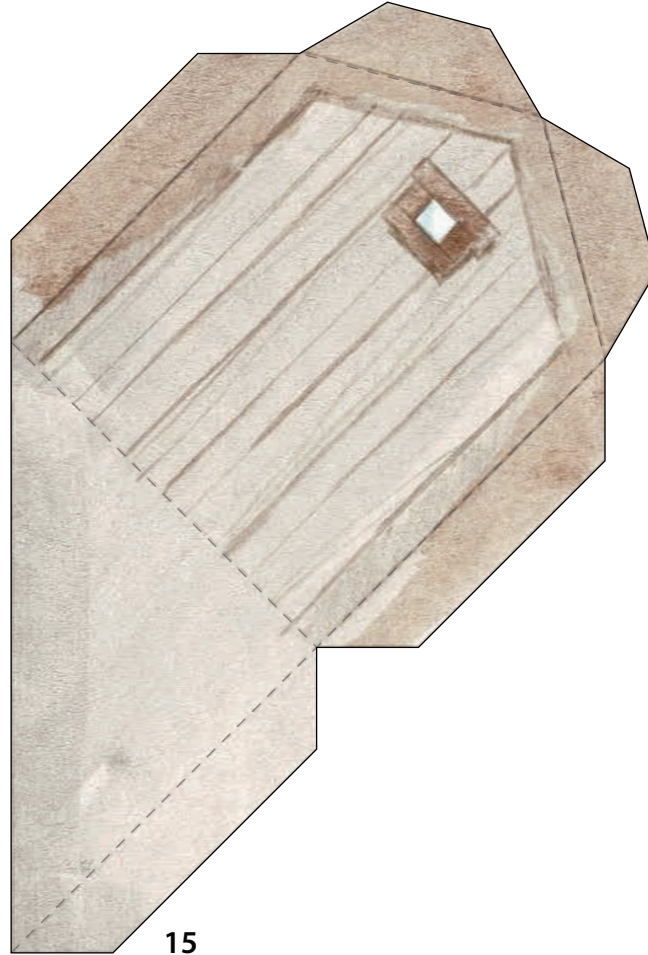
16



BUILDING GROUP B



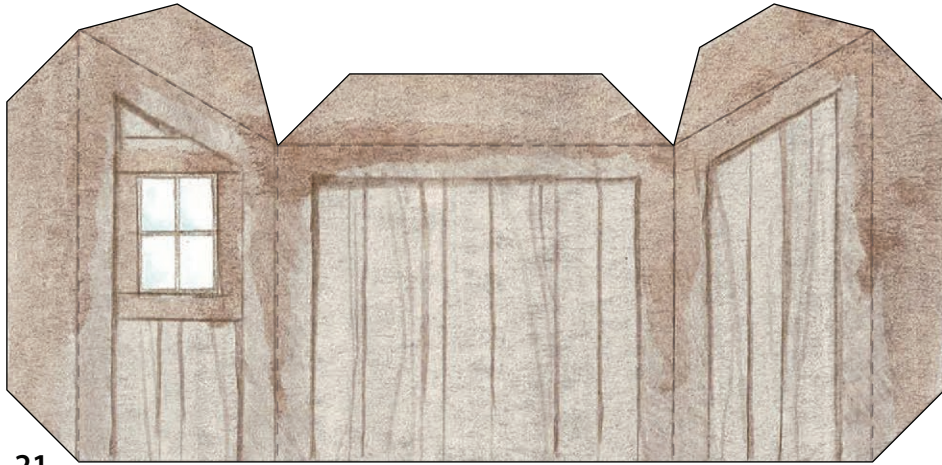
13



15



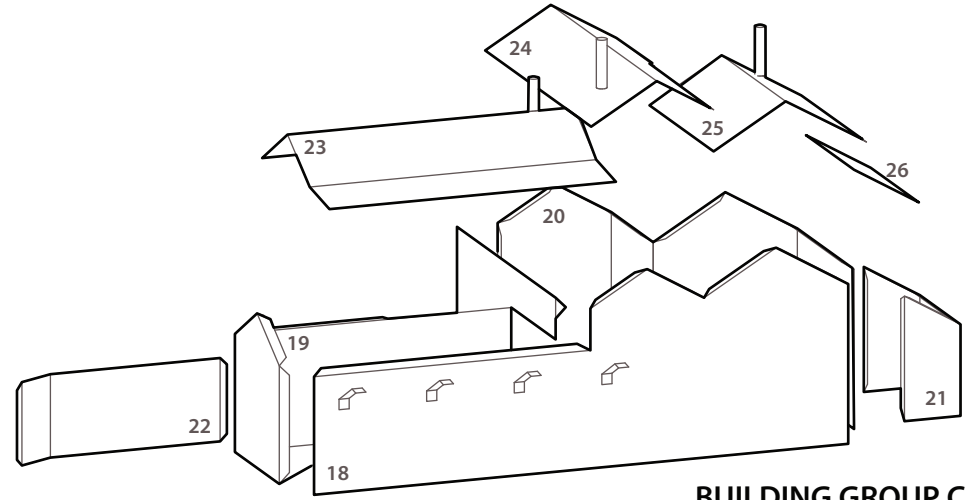
17



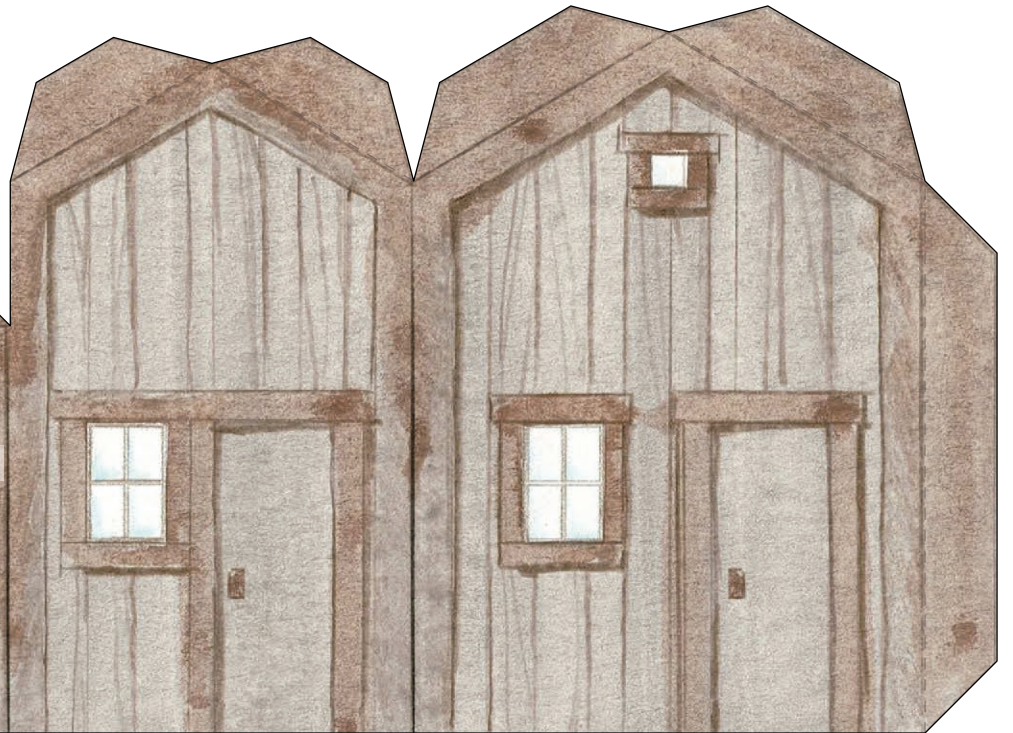
21

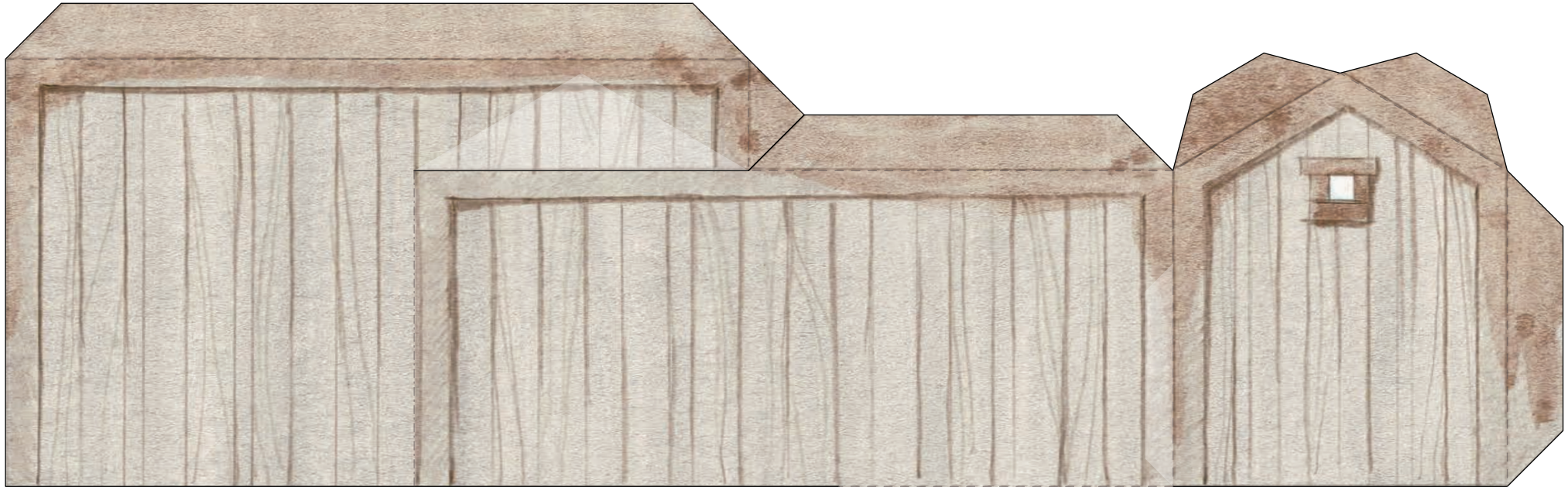


18



BUILDING GROUP C





19



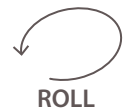
22

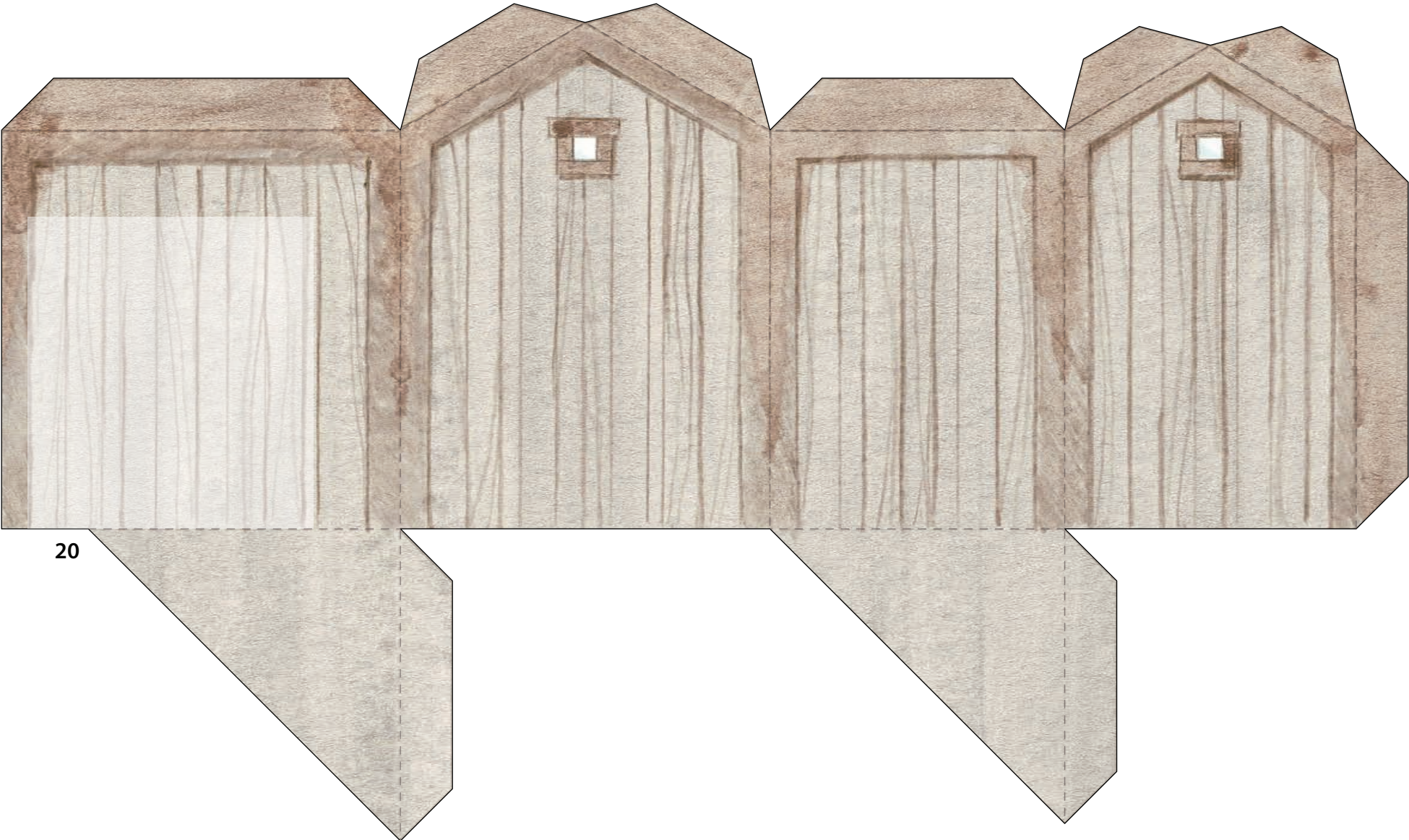


BRACES



CHIMNEY





20

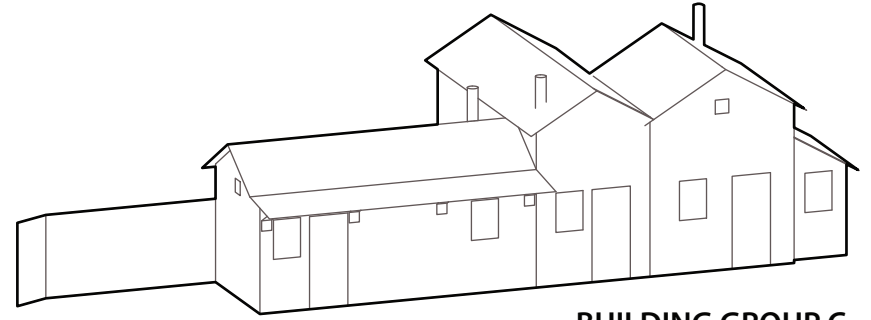




23



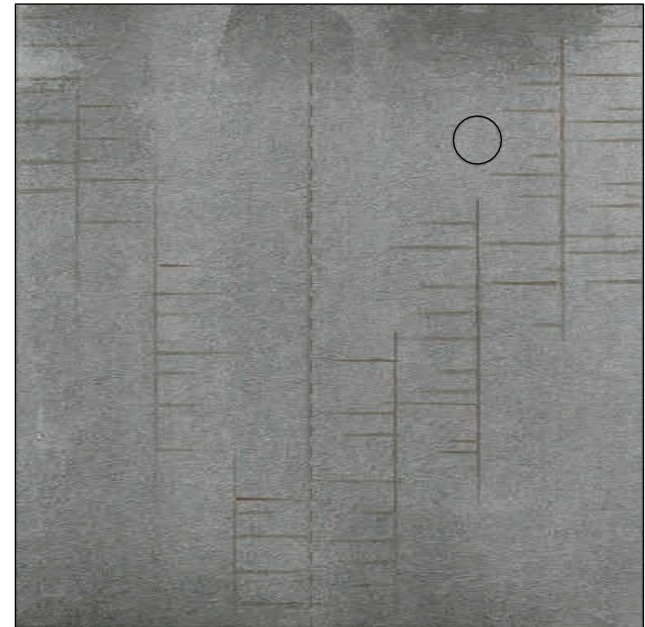
24



BUILDING GROUP C

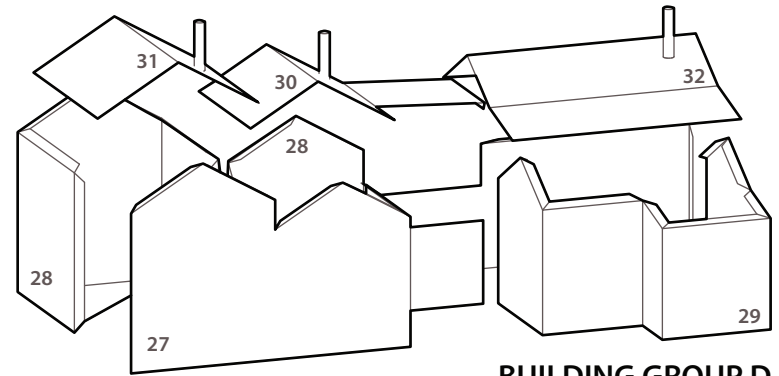


26

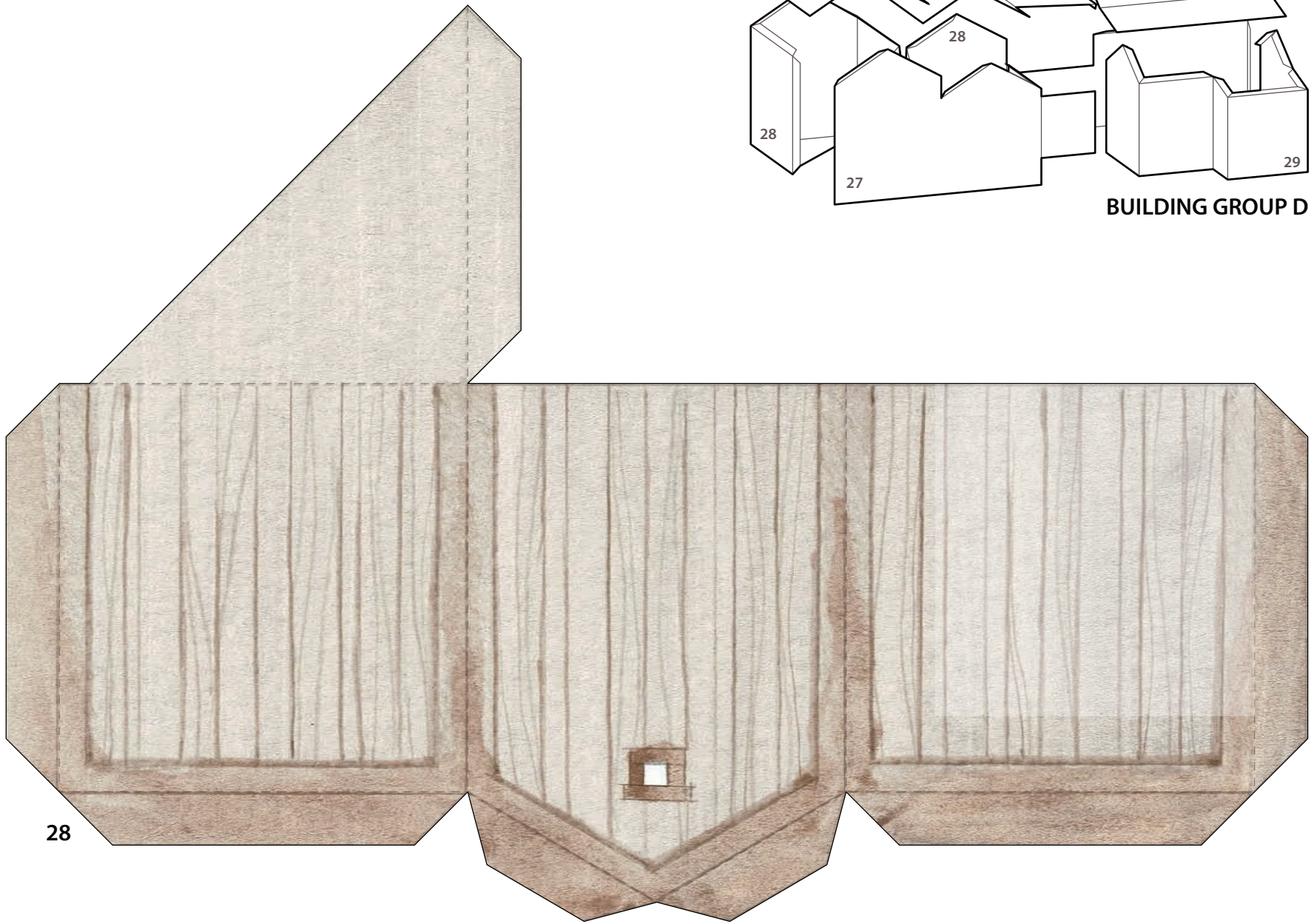


25





BUILDING GROUP D



28



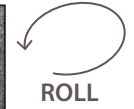
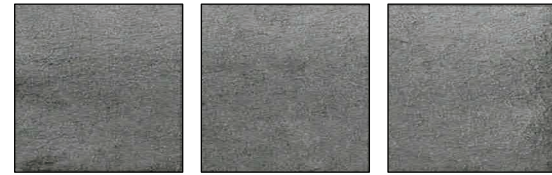


27

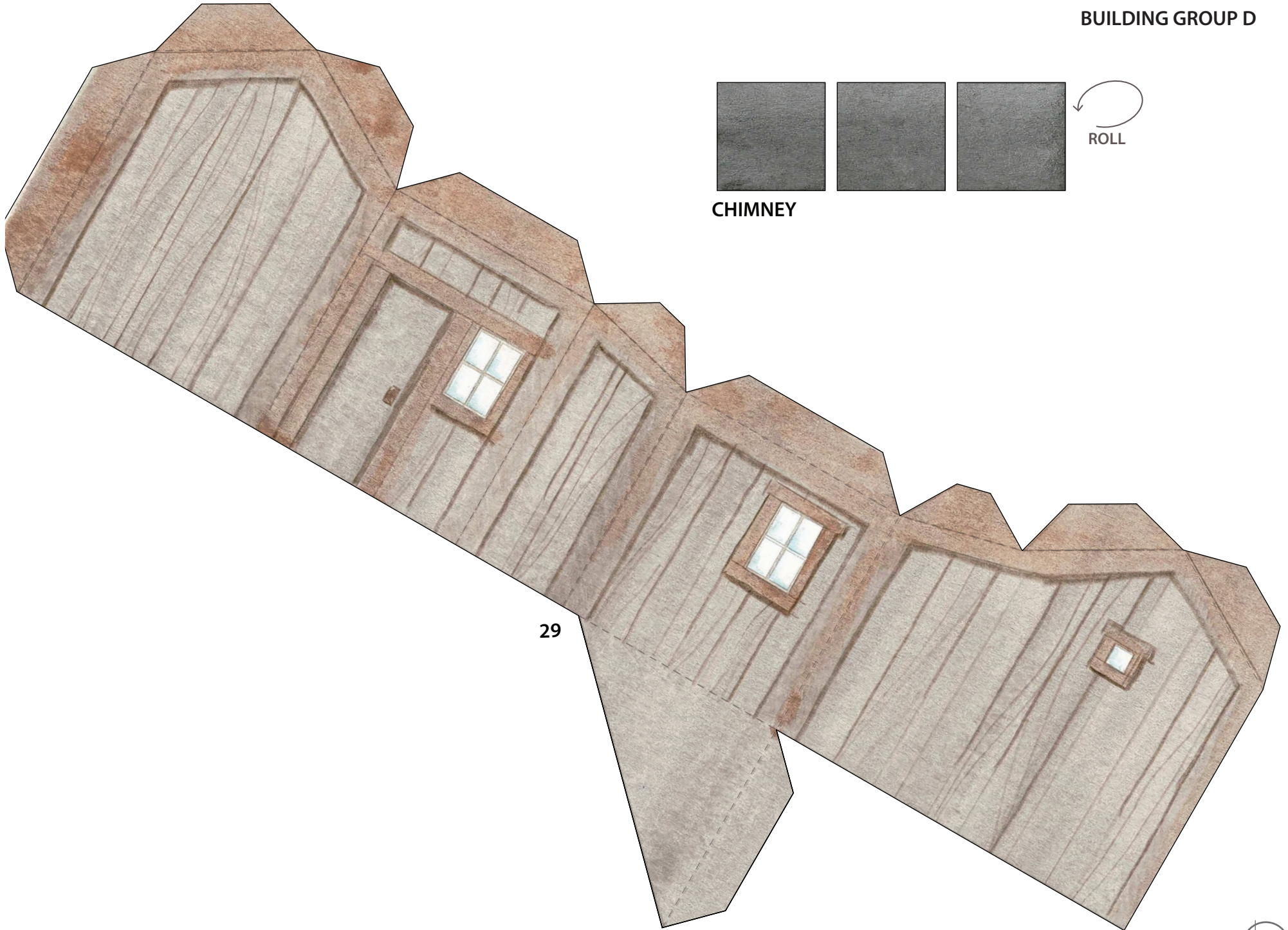


28



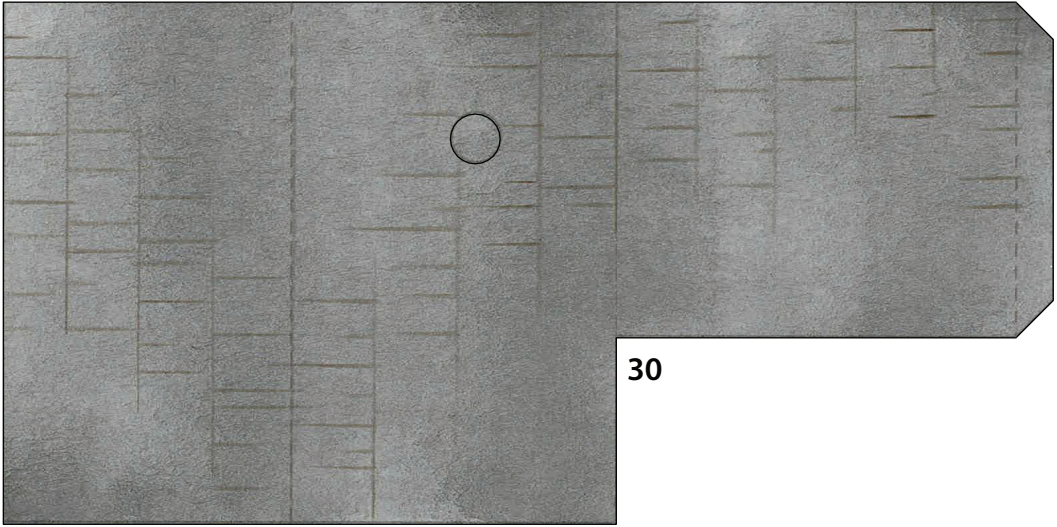


CHIMNEY

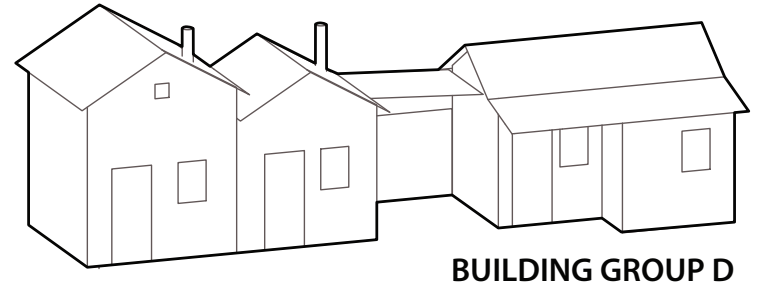


29

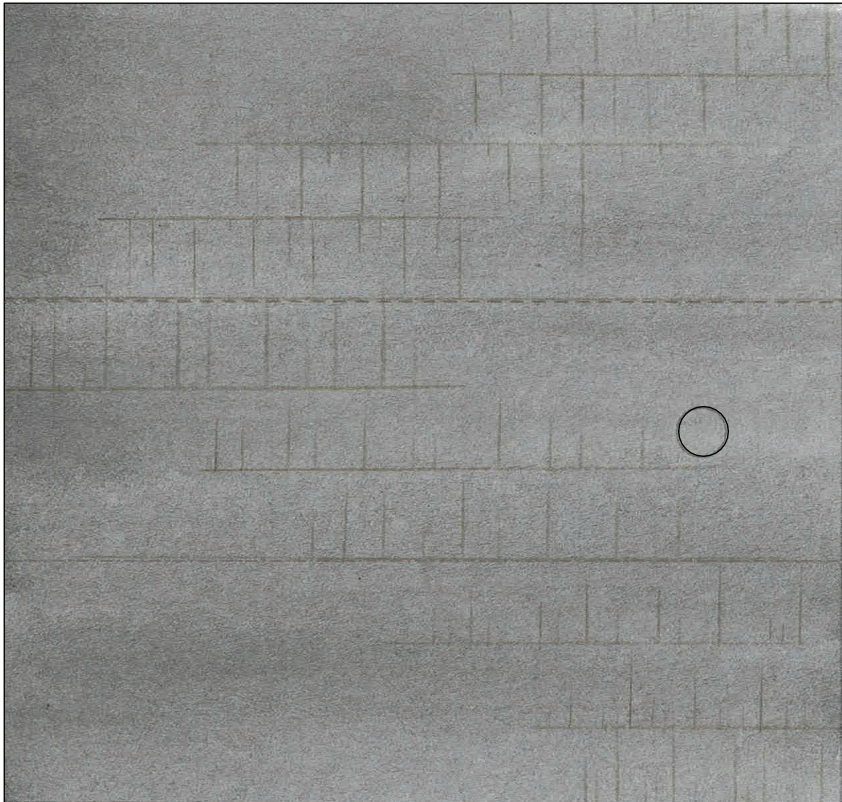




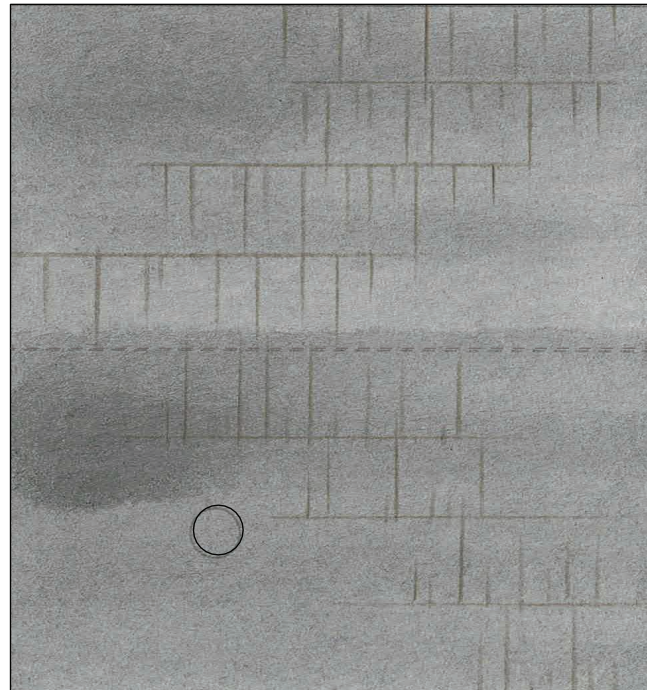
30



BUILDING GROUP D

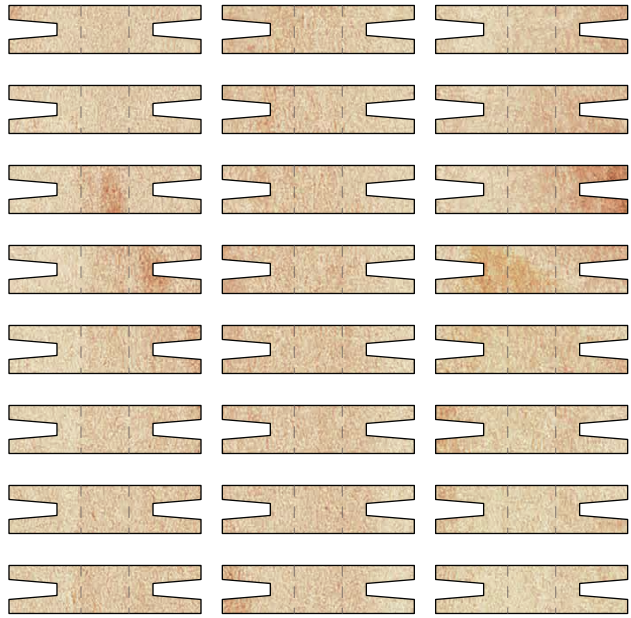


32

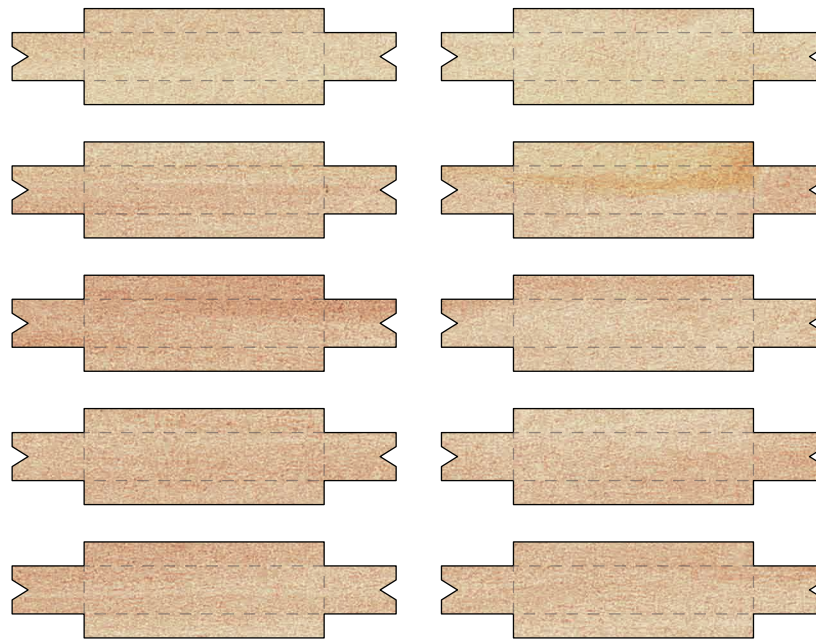


31

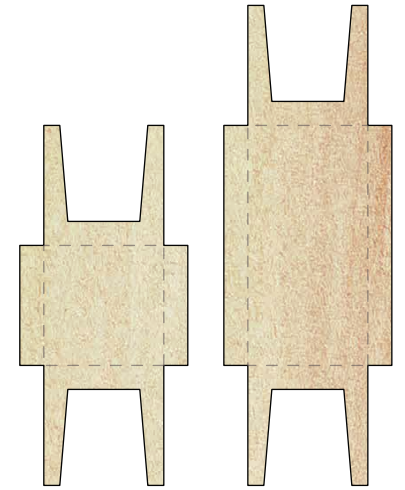




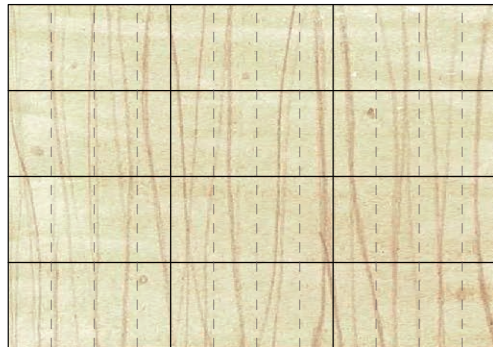
STOOLS



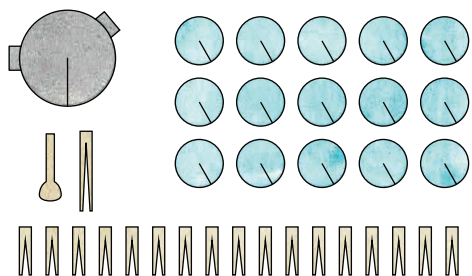
BENCHES



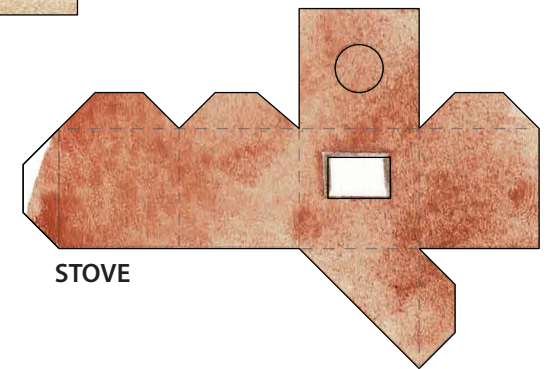
TABLES



FIRE WOOD



COOKWEAR AND TABLEWEAR



STOVE



ROOKERY *noun*

1: a: the nests or breeding place of a colony of rooks

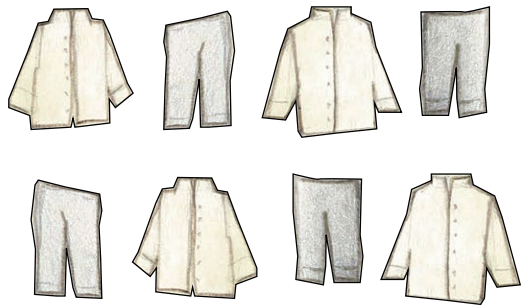
also : a colony of rooks

b: a breeding ground or haunt especially of gregarious birds or mammals (such as penguins or seals)

also : a colony of such birds or mammals

2: a crowded dilapidated tenement or group of dwellings

There is one crow for every Chinese worker employed at the sawmill in 1889.



LAUNDRY



MUSICAL INSTRUMENTS

